

Guia upgrade WP4


Upgrade video: <http://url.cn/Qsf9an>

1. Upgrade cable:

Ver abajo

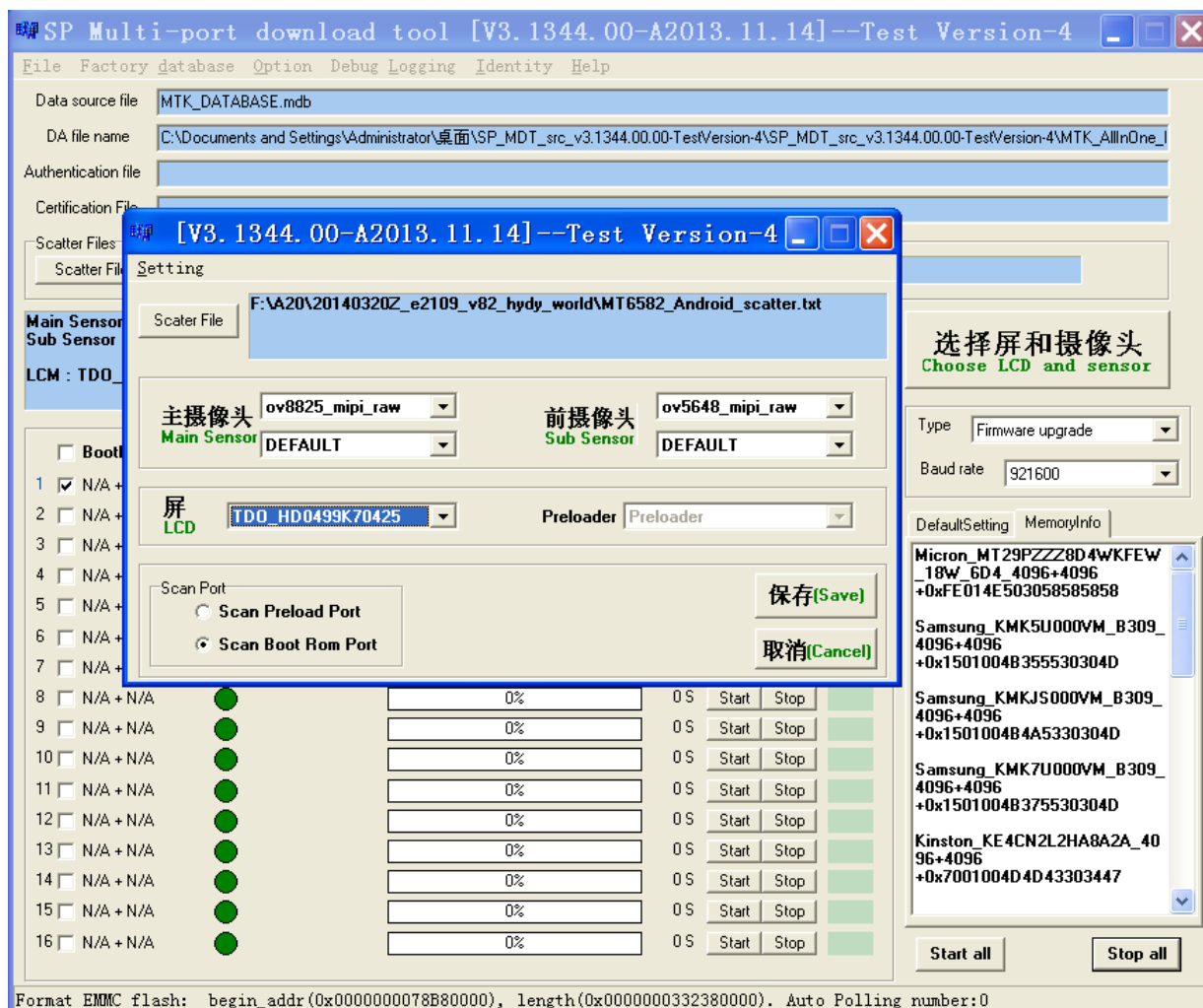


2. Upgrade herramienta:

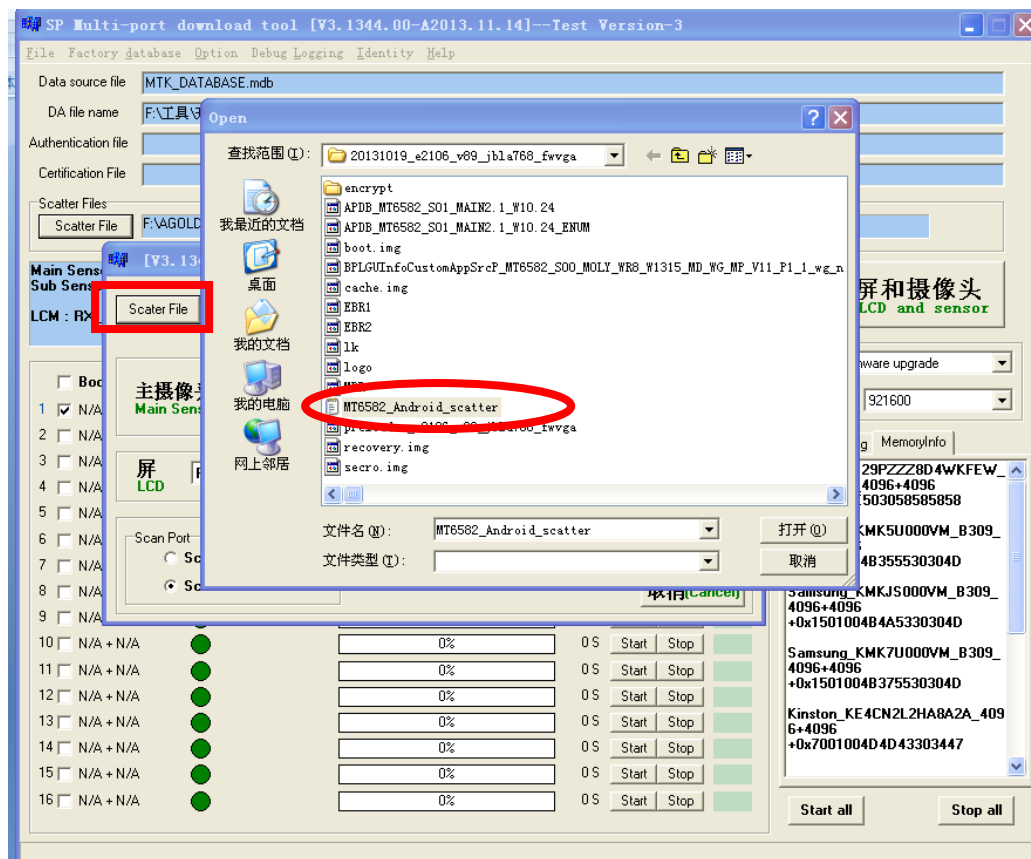
 SP_MDT_src_v3.1344.00.00-TestVersion-4.rar

Descomprimir la herramienta

- 1) Pulse en el icono "SPMultiPortFlashDownloadProject.exe" , que le indicamos abajo



2) Seleccione el archivo: pulse en “Scatter File” (vea abajo) .



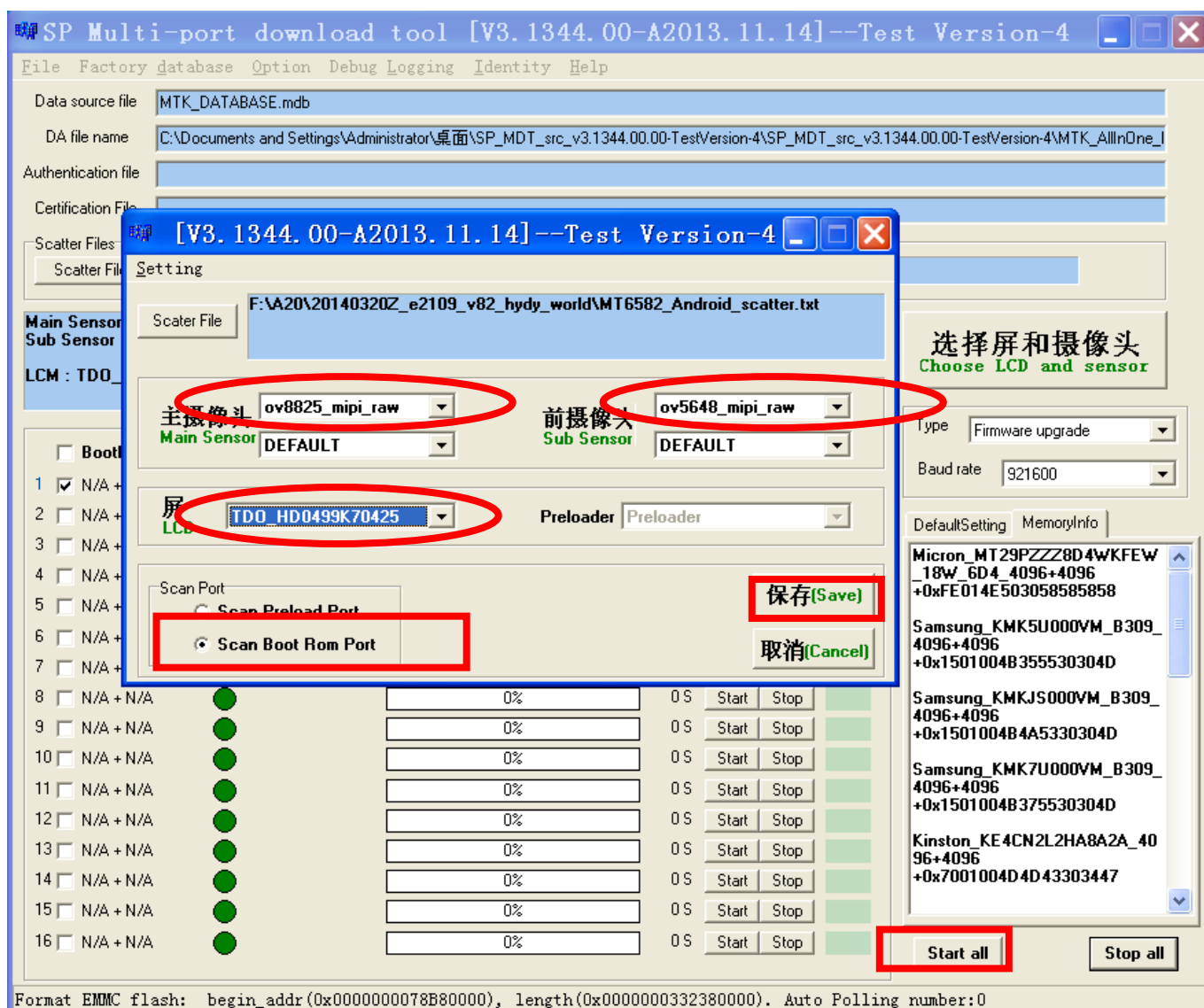
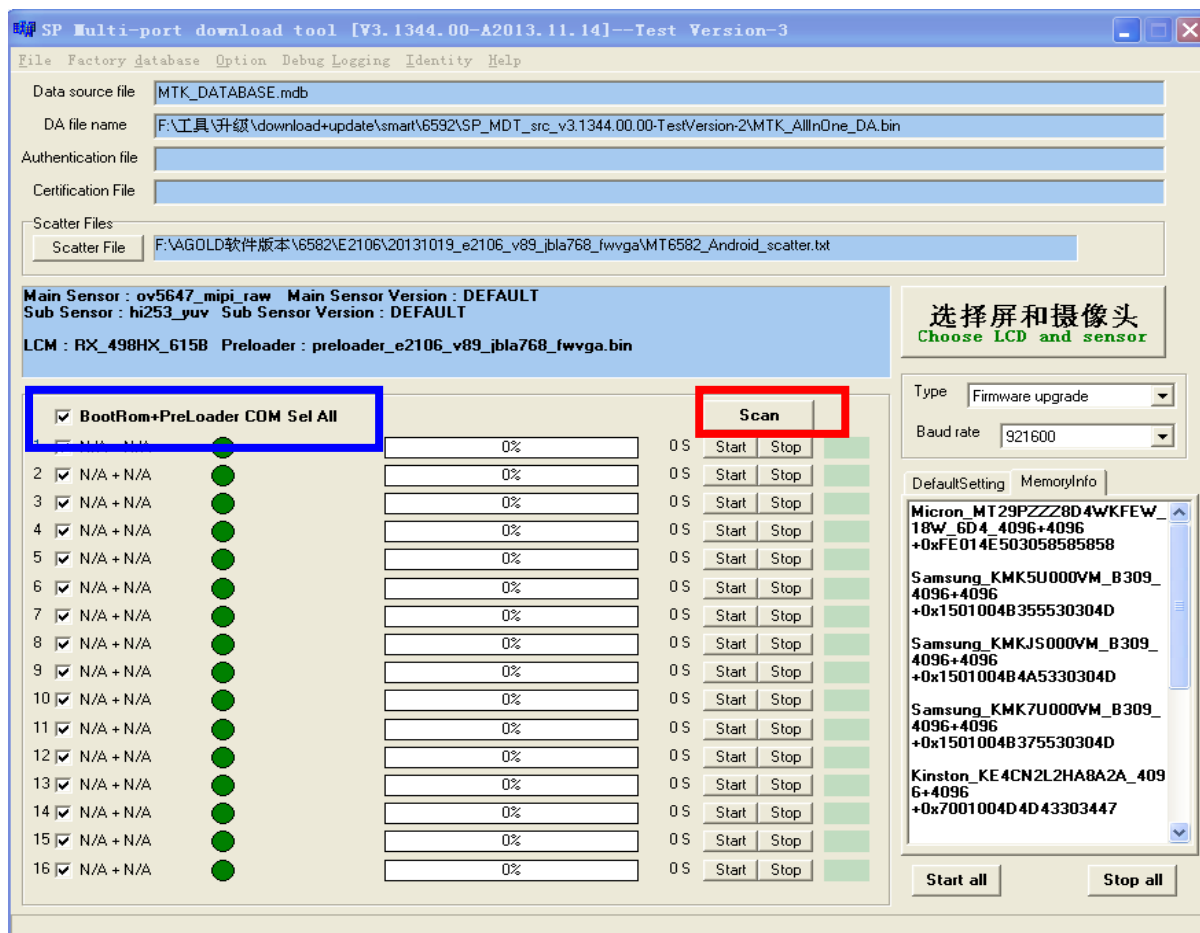
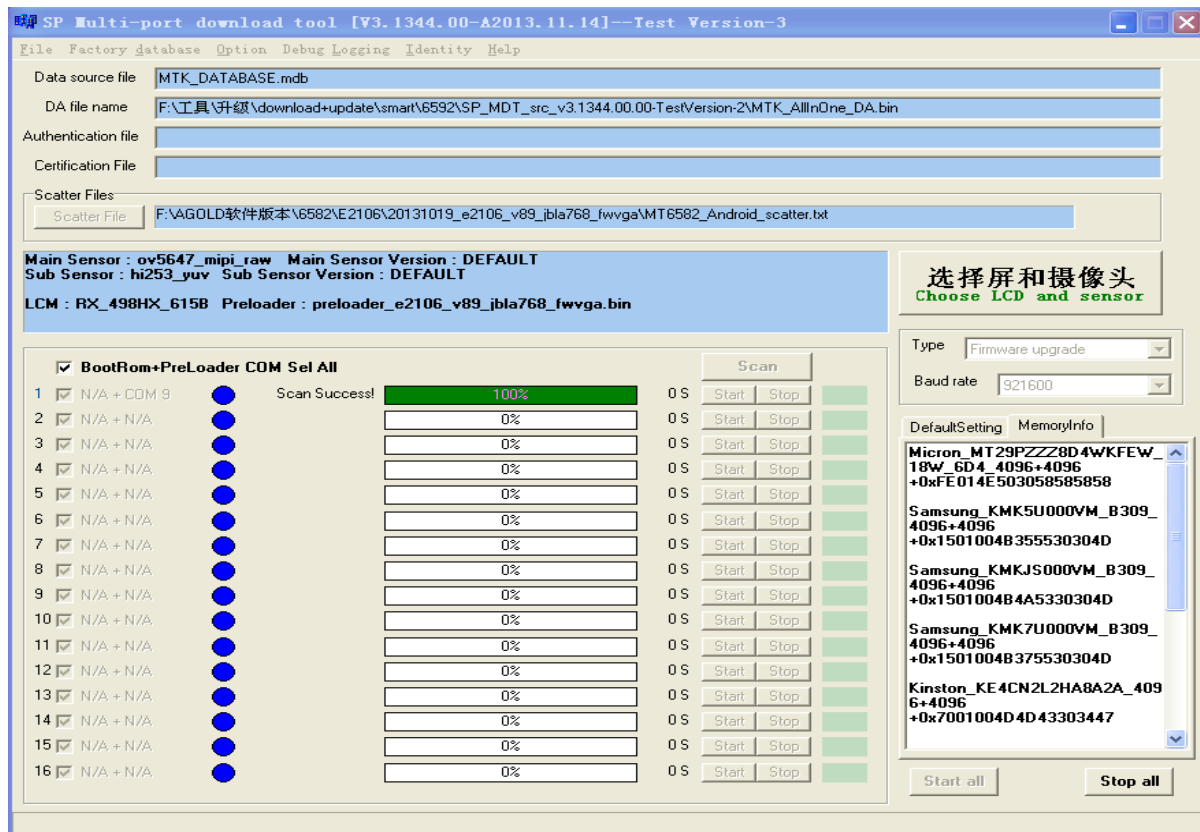


图3 (choose driver)

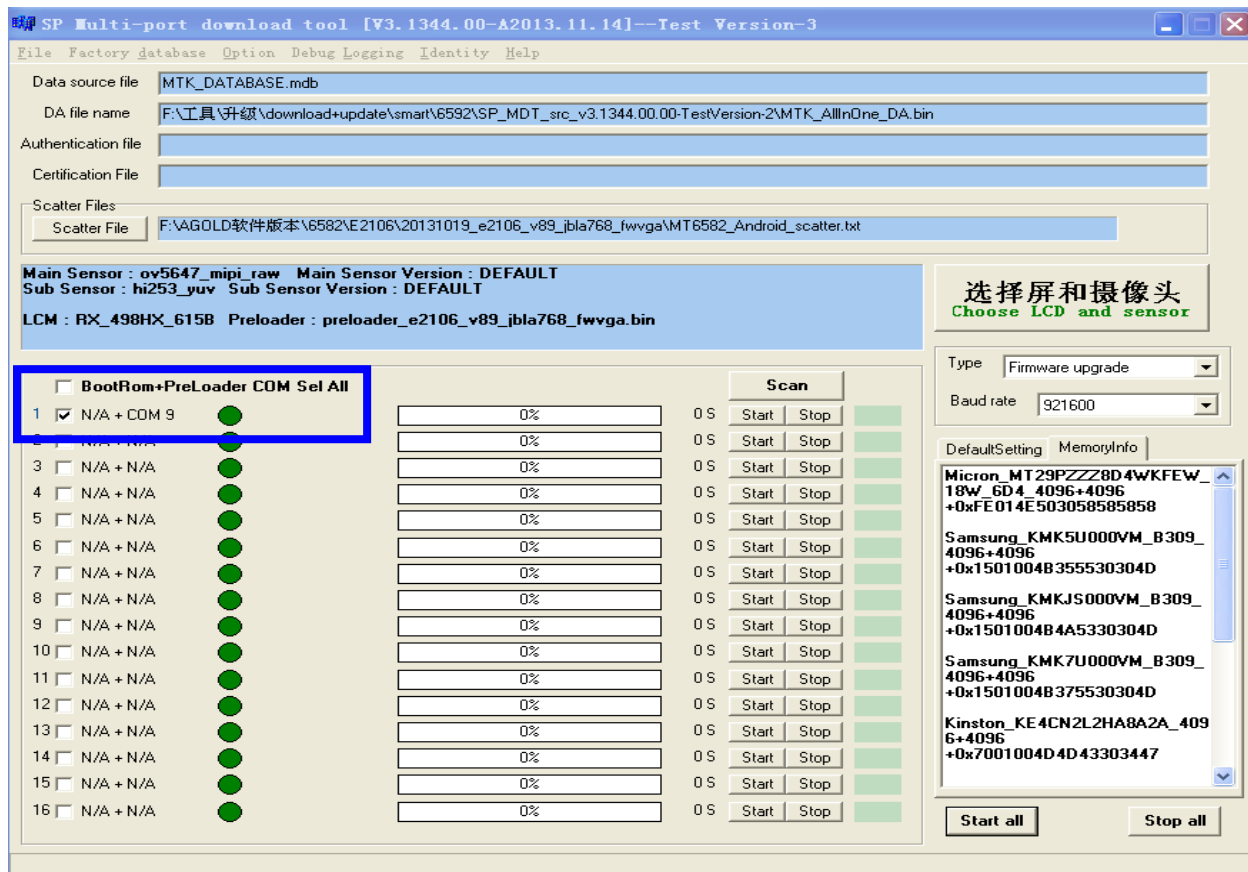
- 3) Después de haber seleccionado el driver, pulsa "Save", después pulse en "Start all", conectar el telefono y actualizar.



(Explorar la puerta com)



(finalizada la exploración)



(pulse en la puerta com disponible)

Finalizados los pasos de arriba, saque la bateria, desenchufe el cable usb, despues pulse en "start all", monte la bateria, enchufe el cable usb

SP Multi-port download tool [V3.1344.00-A2013.11.14]--Test Version-3

File Factory database Option Debug Logging Identity Help

Data source file: MTK_DATABASE.mdb

DA file name: F:\工具\升级\download+update\smart\6592\SP_MDT_src_v3.1344.00.00-TestVersion-2\MTK_AllInOne_DA.bin

Authentication file:

Certification File:

Scatter Files:

Scatter File: F:\AGOLD软件版本\6582\E2106\20131019_e2106_v89_ibla768_fwvga\MT6582_Android_scatter.txt

Main Sensor: ov5647_mipi_raw Main Sensor Version: DEFAULT
Sub Sensor: hi253_yuv Sub Sensor Version: DEFAULT

LCM: RX_498HX_615B Preloader: preloader_e2106_v89_ibla768_fwvga.bin

选择屏和摄像头
Choose LCD and sensor

Type: Firmware upgrade
Baud rate: 921600

DefaultSetting MemoryInfo

CURRENT
MEM:0x45010053454D303847
SANDISK_SD5D28B_8G_4096+4096
Micron_MT29PZZZ8D4WKFEW_18W_6D4_4096+4096
+0xFE014E503058585858
Samsung_KMK5U000VM_B309_4096+4096
+0x1501004B355530304D
Samsung_KMKJ5000VM_B309_4096+4096
+0x1501004B4A5330304D
Samsung_KMK7U000VM_B309_4096+4096
+0x1501004B375530304D

Start all Stop all

Format EMMC flash: begin_addr (0x0000000078B80000), length (0x000000015FBA0000). Auto Polling number:0

BootRom+PreLoader COM Sel All				Scan
1	<input checked="" type="checkbox"/> N/A + COM 9	DL	20%	33 S Start Stop
2	<input type="checkbox"/> N/A + N/A		0%	0 S Start Stop
3	<input type="checkbox"/> N/A + N/A		0%	0 S Start Stop
4	<input type="checkbox"/> N/A + N/A		0%	0 S Start Stop
5	<input type="checkbox"/> N/A + N/A		0%	0 S Start Stop
6	<input type="checkbox"/> N/A + N/A		0%	0 S Start Stop
7	<input type="checkbox"/> N/A + N/A		0%	0 S Start Stop
8	<input type="checkbox"/> N/A + N/A		0%	0 S Start Stop
9	<input type="checkbox"/> N/A + N/A		0%	0 S Start Stop
10	<input type="checkbox"/> N/A + N/A		0%	0 S Start Stop
11	<input type="checkbox"/> N/A + N/A		0%	0 S Start Stop
12	<input type="checkbox"/> N/A + N/A		0%	0 S Start Stop
13	<input type="checkbox"/> N/A + N/A		0%	0 S Start Stop
14	<input type="checkbox"/> N/A + N/A		0%	0 S Start Stop
15	<input type="checkbox"/> N/A + N/A		0%	0 S Start Stop
16	<input type="checkbox"/> N/A + N/A		0%	0 S Start Stop

(descargando)

SP Multi-port download tool [V3.1344.00-A2013.11.14]--Test Version-3

File Factory database Option Debug Logging Identity Help

Data source file: MTK_DATABASE.mdb

DA file name: F:\工具\升级\download+update\smart\6592\SP_MDT_src_v3.1344.00.00-TestVersion-2\MTK_AllInOne_DA.bin

Authentication file:

Certification File:

Scatter Files:

Scatter File: F:\AGOLD软件版本\6582\E2106\20131019_e2106_v89_ibla768_fwvga\MT6582_Android_scatter.txt

Main Sensor: ov5647_mipi_raw Main Sensor Version: DEFAULT
Sub Sensor: hi253_yuv Sub Sensor Version: DEFAULT

LCM: RX_498HX_615B Preloader: preloader_e2106_v89_ibla768_fwvga.bin

选择屏和摄像头
Choose LCD and sensor

Type: Firmware upgrade
Baud rate: 921600

DefaultSetting MemoryInfo

CURRENT
MEM:0x45010053454D303847
SANDISK_SD5D28B_8G_4096+4096
Micron_MT29PZZZ8D4WKFEW_18W_6D4_4096+4096
+0xFE014E503058585858
Samsung_KMK5U000VM_B309_4096+4096
+0x1501004B355530304D
Samsung_KMKJ5000VM_B309_4096+4096
+0x1501004B4A5330304D
Samsung_KMK7U000VM_B309_4096+4096
+0x1501004B375530304D

Start all Stop all

Format EMMC flash: begin_addr (0x0000000078B80000), length (0x000000015FBA0000). Auto Polling number:0

BootRom+PreLoader COM Sel All				Scan
1	<input checked="" type="checkbox"/> N/A + COM 9	DL OK	100%	129 S Start Stop A
2	<input type="checkbox"/> N/A + N/A		0%	0 S Start Stop
3	<input type="checkbox"/> N/A + N/A		0%	0 S Start Stop
4	<input type="checkbox"/> N/A + N/A		0%	0 S Start Stop
5	<input type="checkbox"/> N/A + N/A		0%	0 S Start Stop
6	<input type="checkbox"/> N/A + N/A		0%	0 S Start Stop
7	<input type="checkbox"/> N/A + N/A		0%	0 S Start Stop
8	<input type="checkbox"/> N/A + N/A		0%	0 S Start Stop
9	<input type="checkbox"/> N/A + N/A		0%	0 S Start Stop
10	<input type="checkbox"/> N/A + N/A		0%	0 S Start Stop
11	<input type="checkbox"/> N/A + N/A		0%	0 S Start Stop
12	<input type="checkbox"/> N/A + N/A		0%	0 S Start Stop
13	<input type="checkbox"/> N/A + N/A		0%	0 S Start Stop
14	<input type="checkbox"/> N/A + N/A		0%	0 S Start Stop
15	<input type="checkbox"/> N/A + N/A		0%	0 S Start Stop
16	<input type="checkbox"/> N/A + N/A		0%	0 S Start Stop